



Il CISEF Germana Gaslini è
Provider Nazionale Accreditato ECM n. 856
Certificazione ISO9001:2008
Director: Maurizio Luvizone



Centro Internazionale di Studi e Formazione (C.I.S.E.F.) "Germana Gaslini"
Via Romana della Castagna, 11 A - 16148 Genova Quarto - Italy

Registration

The course is open to 25 Anesthetists, Paediatricians, Neonatologists and Cardiologists.
Applications will be accepted on a competitive basis.

Deadline for registration: April 13th, 2016.

Please, register on the website www.cisef.org or download and fill in the registration form from the course website and return it to the organizing secretariat by e-mail or fax.

Registration fees

The fee of € 1.100,00 covers: access to scientific sessions, eight coffee breaks and four lunches.
The fee can be paid after receiving confirmation from the organizing secretariat on-line with credit card or by wire transfer (details on www.cisef.org).

Italian CME credits

The course has been accredited for Medical Doctors.

Disciplines: Paediatrics, Neonatology, Anesthesia and Resuscitation, Cardiology.

Official language: English

How to reach the venue

Plane: from the International Airport Cristoforo Colombo, shuttle bus n. 100 (runs every hour) takes you to Genova Brignole railway station, where you can take bus n. 17 to Via Romana della Castagna.

Train: get off at Genova Brignole railway station, take bus n. 17 and get off in Corso Europa, in front of Via Romana della Castagna.

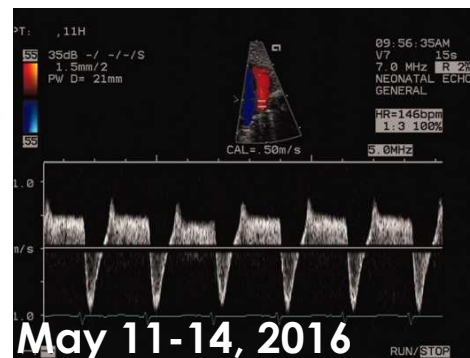
Car: motorway exit Genova-Nervi, take Corso Europa westwards, take the overpass to change direction and drive eastwards, pass the Hotel AC and ESSO gas station on the right, after 50 mts. turn right into Via Romana della Castagna, go straight 80 mts., enter the gate and follow the dust lane up to the parking lot.

Hotel special rates:

AC HOTEL - <http://it.ac-hotels.com>, Corso Europa, 1075, Genova – tel. 010 3071180

IRIS HOTEL - <http://www.hoteliris.it>, Via Gabriele Rossetti, 3-5, Genova – tel. 010 3760703

Neonatal and Paediatric Functional Echocardiography – II ED.



CISEF Germana Gaslini, Genova - Italy

EVENTO 856-152294 - CREDITI **30,4** - Obiettivo formativo di sistema n. 29:
Innovazione tecnologica: valutazione, miglioramento dei processi di gestione delle tecnologie biomediche e dei dispositivi medici. Health Technology Assessment.

Accreditamento per Medico Chirurgo discipline: Pediatria, Neonatologia, Anestesia e Rianimazione, Cardiologia

Organizing Committee

Silvia Buratti – Gaslini Children's Hospital, Genoa - Italy

Elisabetta Lampugnani – Gaslini Children's Hospital, Genoa – Italy

Andrea Moscatelli – Gaslini Children's Hospital, Genoa - Italy

Pietro Tuo – Gaslini Children's Hospital, Genoa - Italy

Endorsed by:



Organizing Secretariat

Manuela Aloe

C.I.S.E.F. - Centro Internazionale di Studi e Formazione "Germana Gaslini"
Badia della Castagna, Via Romana della Castagna, 11 A, 16148 Genova - Italy
tel.: +39 010 5636.2864; fax: +39 010 5636.2885

e-mail: manuelaaloe@cisef.org

web-site: www.cisef.org

The course is aimed at neonatal and paediatric intensivists who wish to learn the essentials of echocardiography in neonatal and paediatric intensive care.

Assessment of cardiac anatomy and cardiovascular function at the bedside is a fundamental part of neonatal and pediatric medicine. Functional echocardiography (fECHO) provides clinicians with real time and longitudinal information on cardiac function and hemodynamics; it may contribute to a better understanding of complex pathophysiological processes and support the cardiovascular management of critically ill neonates and children.

fECHO has been used in assessment of patent ductus arteriosus, congenital heart disease, pulmonary hypertension, cardiovascular compromise/shock and for the evaluation of response to pharmacological treatment. The role of fECHO in the post operative management of heart surgery is essential. During CPR and ECMO echocardiographic evaluation provides critical diagnostic information.

The program provides formal didactic education, practical sessions with healthy children and high fidelity neonatal simulators and bedside teaching sessions in the NICU and PICU. The course is held by skilled neonatal and paediatric cardiologists and neonatologists with clinical and research expertise.

FACULTY:

Mahmood Ebrahimi - Keck School of Medicine, University of Southern California Los Angeles – U.S.A.

Nicholas Evans - Royal Prince Alfred Hospital Sydney – Australia

Tina A. Leone - Columbia University New York – U.S.A.

Maurizio Marasini – Gaslini Children's Hospital, Genoa - Italy

Andrea Moscatelli - Gaslini Children's Hospital, Genoa - Italy

Alessandro Rimini - Gaslini Children's Hospital, Genoa – Italy

PROGRAM

MAY 11ST

8.30 Registration
9.00 Welcome address

Session 1: Principles and anatomy

9.15 Basic physical principles of ultrasonography – **T. Leone**
9.45 Basic features and controls of the US scanner – **M. Ebrahimi**
10.30 *Coffee Break*
11.00 2D, M mode, color flow and Doppler echocardiography – **M. Ebrahimi**
11.45 Normal cardiac anatomy in 2 D images – **M. Ebrahimi**
12.30 *Lunch*
14.00 Obtaining the standard echocardiographic views – **M. Ebrahimi**
14.45 Sequential assessment of cardiac structure and function – **N. Evans**
15.45 Red flags of congenital heart disease – **M. Ebrahimi**
16.30 Conclusions

MAY 12ND

Session 2: Haemodynamics

9.00 Assessment of gradients and regurgitation – **T. Leone**
9.45 Measurement and assessment of aortic flow, pulmonary flow, SVC flow and atrial shunting – **N. Evans**
10.45 *Coffee Break*
11.15 Assessment of systolic, diastolic and global cardiac function – **T. Leone**
12.00 Cerebral, renal, intestinal and hepatic blood vessel Doppler – **N. Evans**
12.30 *Lunch*
14.00-17.00 Questions and Hands-on session:
• Station 1: Pediatric simulation: assessment of normal anatomy and function
• Station 2: High fidelity neonatal simulator
• Station 3: NICU bedside teaching session
• Station 4: PICU bedside teaching session

MAY 13RD

Session 3: Neonatal pathology

9.00 Ductal shunting and effect on systemic blood flow in premature newborns
N. Evans
10.00 Evaluation for PPHN and hypoxemia in infants without congenital heart disease – **T. Leone**
10.45 *Coffee Break*
11.15 Assessment of shock in neonates – **T. Leone**
12.30 *Lunch*
14.00-17.00 Questions and Hands-on session:
• Station 1 Pediatric simulation: assessment of normal anatomy and function
• Station 2: High fidelity neonatal simulator
• Station 3: NICU bedside teaching session
• Station 4: PICU bedside teaching session

MAY 14TH

Session 4: Pediatric pathology

9.00 Myocardial dysfunction, heart failure and shock in children –
9.30 Early post cardiac surgery 1st step assessment: 1st part – **A. Rimini**
10.00 Early post cardiac surgery 1st step assessment: 2nd part – **A. Rimini**
10.40 *Coffee Break*
11.10 Echocardiography in extracorporeal life support (ECLS) – **A. Moscatelli**
11.50 Echocardiographic assessment in cardiopulmonary resuscitation
A. Moscatelli
12.30 *Lunch*
14.00 Questions and Hands-on session:
• Station 1: Pediatric simulation: assessment of normal anatomy and function
• Station 2: High fidelity neonatal simulator
• Station 3: NICU bedside teaching session
• Station 4: PICU bedside teaching session
17.00 Final remarks and conclusion – CME Test